

# MONTHLY MEMBERSHIP PROGRESS REPORT

LOCATION INDIA

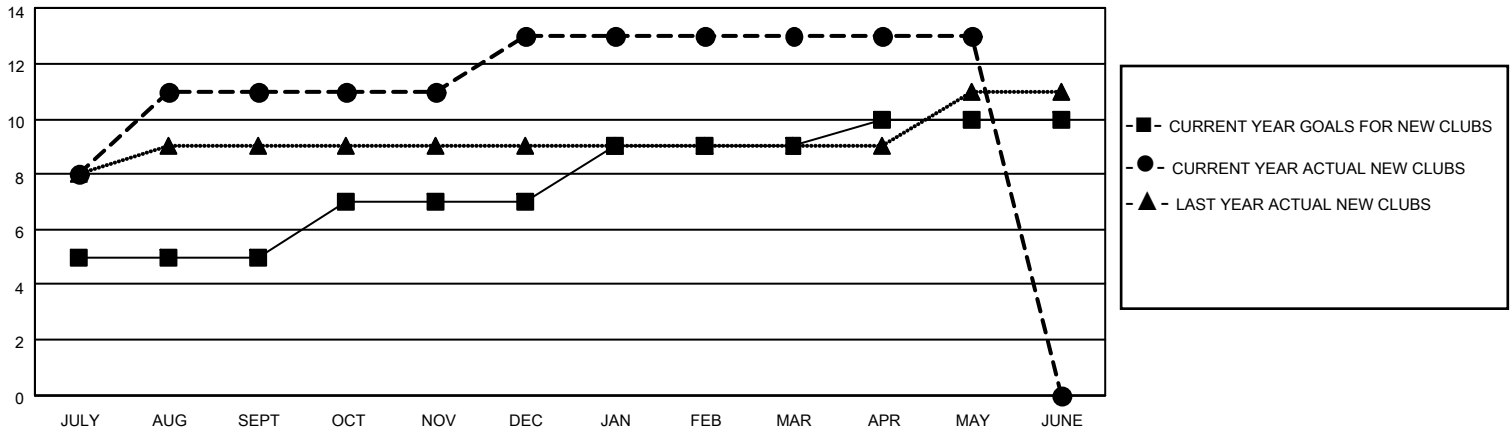
District 322 F

Results as of: 5/31/2021

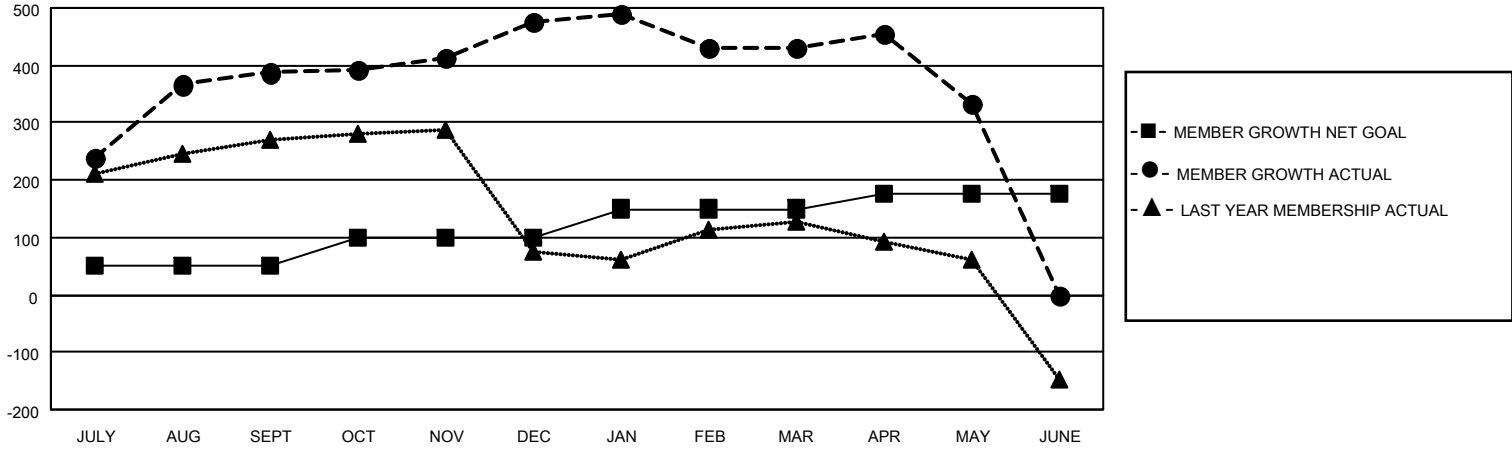
Clubs			
RESULTS FOR 2020-2021			
QUARTER	NEW CLUB GOAL	NEW CLUBS	DROPPED CLUBS
JULY/AUG/SEPT	5	11	3
OCT/NOV/DEC	2	2	0
JAN/FEB/MAR	2	0	3
APR/MAY/JUNE	1	0	0

Members			
RESULTS FOR 2020-2021			
QUARTER	MEMBER GROWTH NET GOAL	MEMBER GROWTH ACTUAL	DROPPED MEMBERS ACTUAL (including transfers)
JULY/AUG/SEPT	50	489	91
OCT/NOV/DEC	50	198	107
JAN/FEB/MAR	50	74	120
APR/MAY/JUNE	25	106	194

**GOALS AND ACTUAL NEW CLUBS CUMULATIVE**



**GOALS AND ACTUAL MEMBERS CUMULATIVE**



DROPPED CLUBS: 6	87 CLUBS OF 127 ADDED 1 OR MORE NEW MEMBERS	<u>GENDER DISTRIBUTION</u> MALE 2,802 (70.83%) FEMALE 1,154 (29.17%)
<u>DROPPED MEMBERS</u> DECEASED 24 CLUB CANCELLED 74 OTHER 414 <hr/> TOTAL 512	<a href="#">CLICK HERE FOR CUMULATIVE MEMBERSHIP DATA</a>	TOTAL FAMILY UNIT MEMBERS 1,541  FAMILY MEMBERS PAYING HALF DUES 921